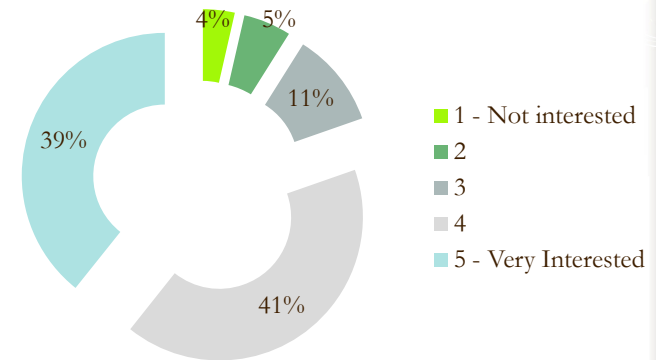


Kentucky Voices for Health Survey Results

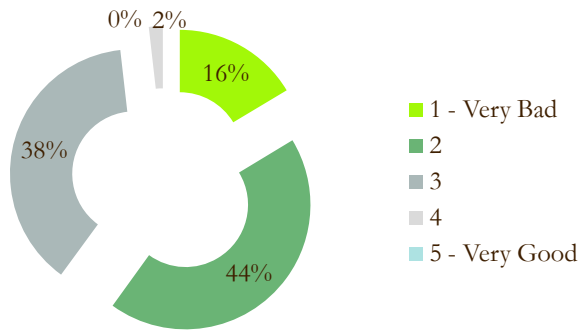
**Presented by:
Kirsten Bullock, MBA, CFRE**

Please Note: There were some manual adjustments made to the survey results based on the 'comments' fields. Therefore, the numbers in this presentation will not match those in the printed handout.

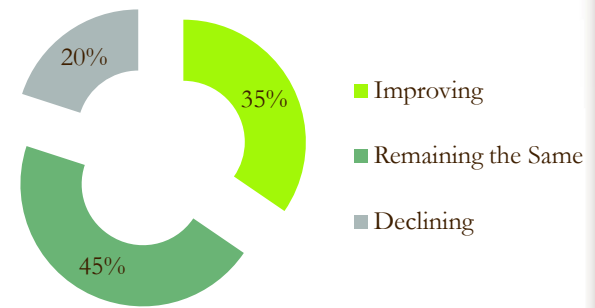
What is your level of interest in KVH?

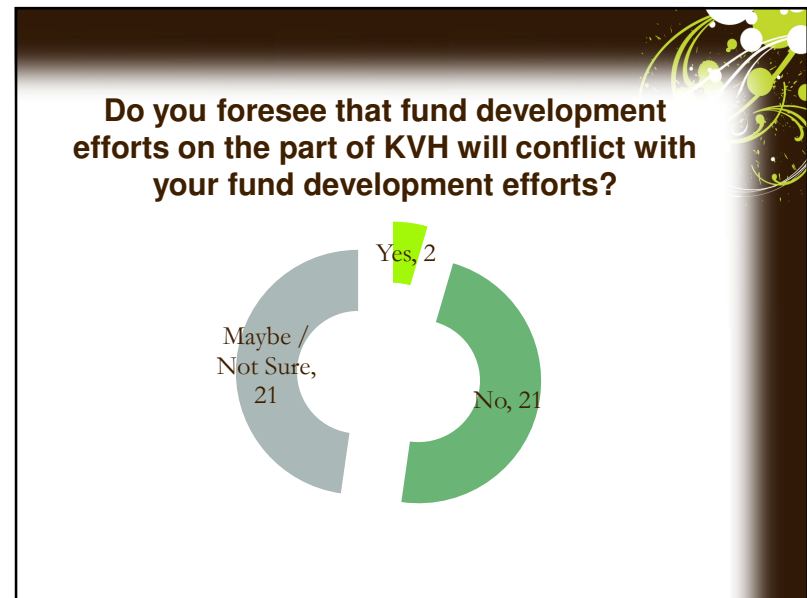
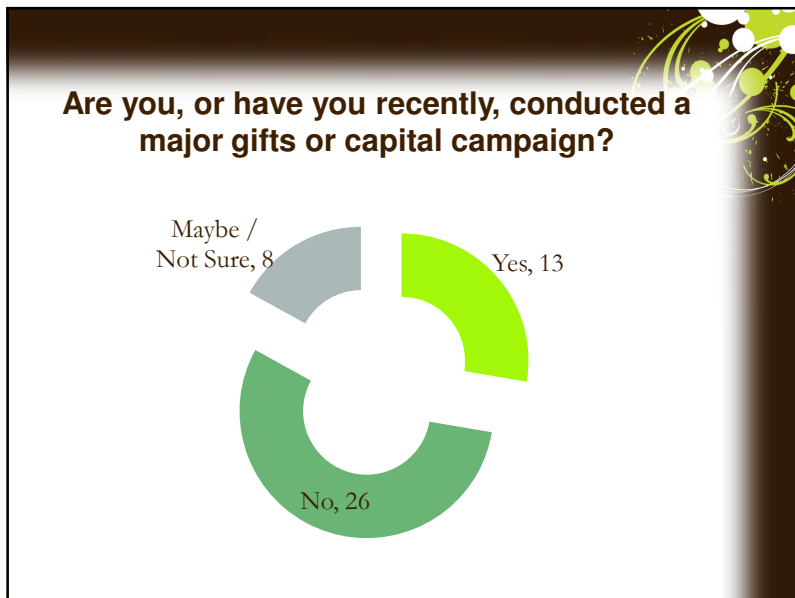
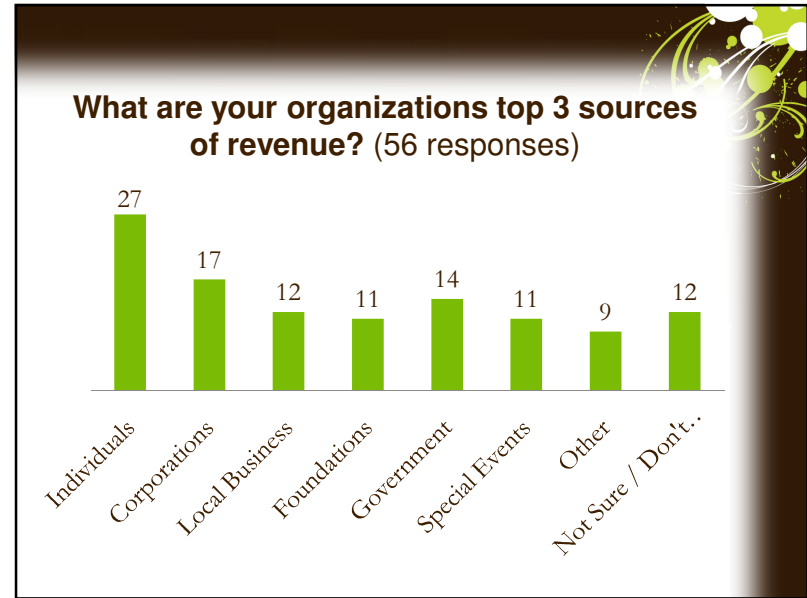
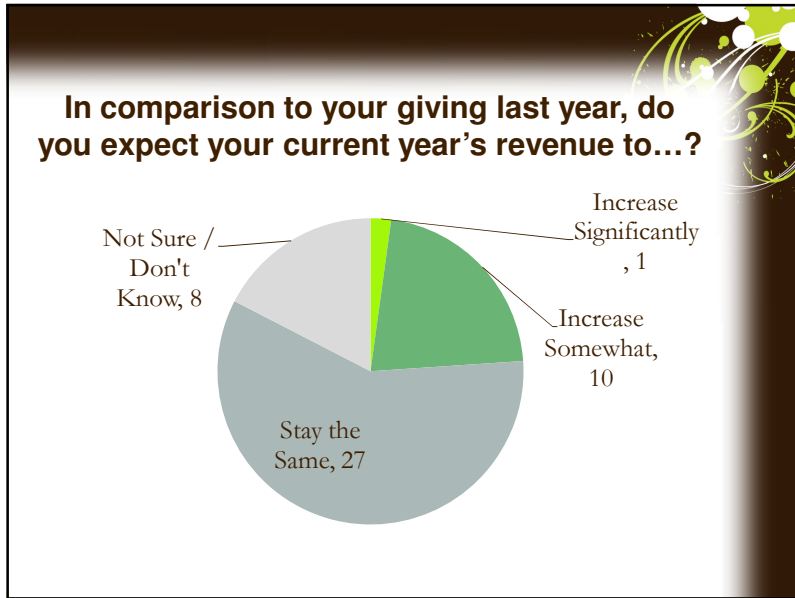


How would you describe your local economic climate?

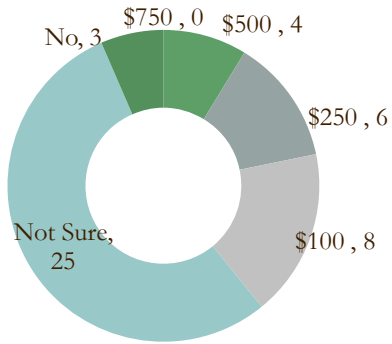


Do you perceive that the economy in your community is...?

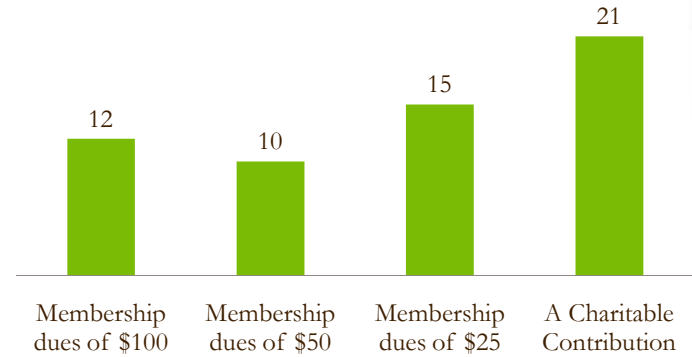




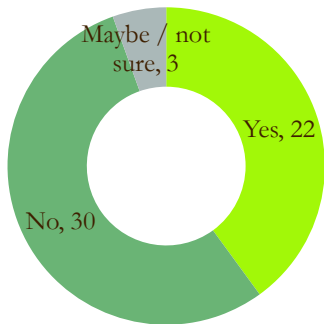
Could you foresee your organization paying to support KVH? If so, at what level?



Could you foresee yourself (individually) contributing financially? Select all that apply. (46 respondents answered this question)



Have you been involved in a major gifts campaign with any other organization?



Would you be interested in assisting with fundraising for KVH?
8 provided contact information

